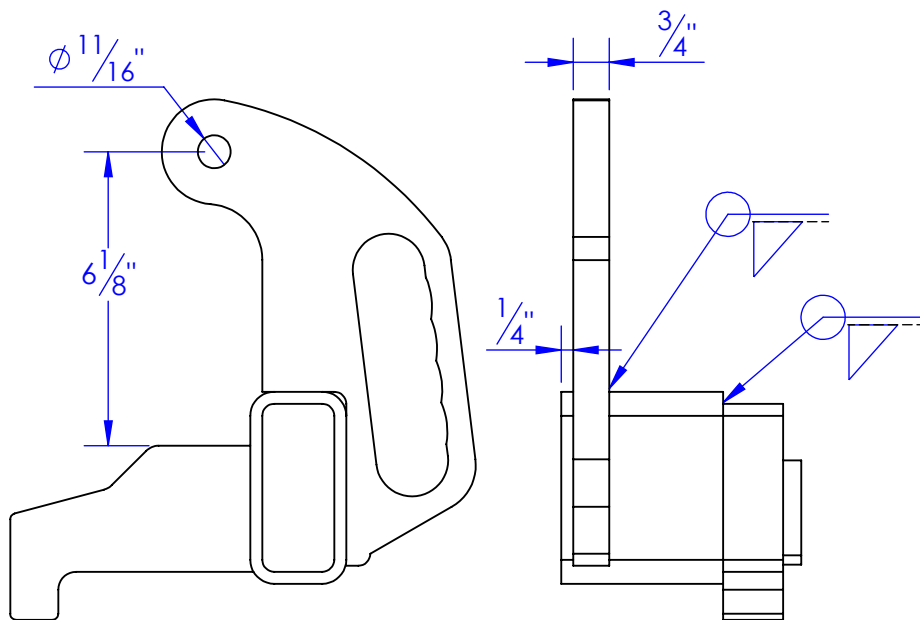
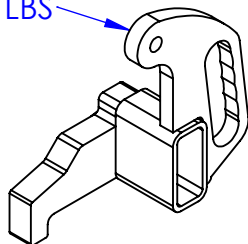
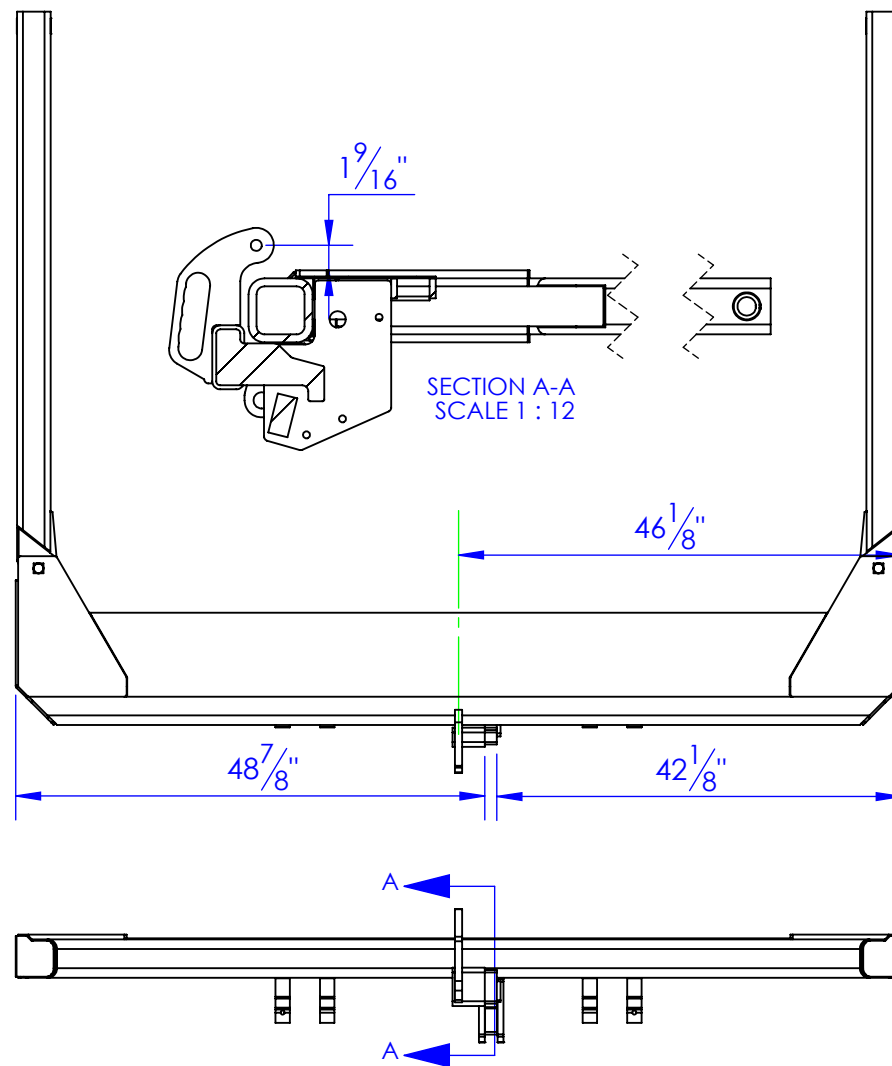


| ITEM NO. | PART NUMBER | DESCRIPTION | DRAWING # | QTY. |
|----------|----------------------|---------------------------------|-----------|------|
| 1 | FI .375 X 1.25 L 2 | LENGTH: 2" | STOCK | 1 |
| 2 | FP-HYDRA HOOK | HYDRA HOOK FOR HYDRA BED | 95-2104 | 1 |
| 3 | FP-HYDRA HOOK HANDLE | HYDRA HOOK HANDLE FOR HYDRA BED | 95-2105 | 1 |
| 4 | RT 4x2x.25 L 3.375 | LENGTH 3-3/8" | STOCK | 1 |

13.70 LBS



| REV. | REVISIONS DESCRIPTION | DATE | APPROVED |
|------|-------------------------------------|-----------|----------|
| A | R & D | 3/19/2013 | |
| B | MADE INTO AN ASSEMBLY FOR CENTERING | 4/8/2013 | |



PROPRIETARY AND CONFIDENTIAL
THE INFORMATION CONTAINED IN THIS DRAWING IS THE SOLE PROPERTY OF TRIPLE C INC. ANY REPRODUCTION IN PART OR AS A WHOLE WITHOUT THE WRITTEN PERMISSION OF TRIPLE C INC. IS PROHIBITED.

DIMENSIONS ARE IN INCHES
TOLERANCES:
FRACTIONAL $\pm 1/16$
ANGULAR: MACH ± 1 BEND \pm
TWO PLACE DECIMAL ± 010
THREE PLACE DECIMAL ± 005

MATERIAL

DO NOT SCALE DRAWING

| NAME | DATE |
|--------------------|---------------|
| DRAWN HEATH | 4/17/2013 |
| PART # | |
| ASM # | OP-HYDRA HOOK |
| COMMENTS: | |

HYDRA HOOK
FOR HYDRA BEDS
ASSEMBLY

P.O. BOX 248,
SABETHA, KS 66534

TRIPLE C
INC.

| SIZE | DWG. NO. | REV. |
|------------|-----------|--------------|
| A | 95-1107 B | B |
| SCALE: 1:2 | WEIGHT: | SHEET 1 OF 1 |